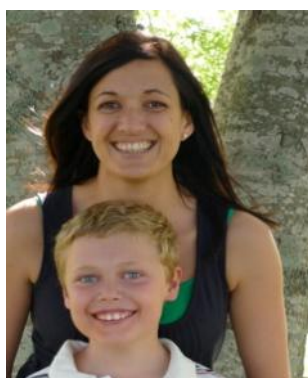




Introducing EOS – Enrichment Opportunities Service

A sudden life changing event can change everything — daily routines, family dynamics, social networks, finances and sporting activities — and leave a host of unanswered questions. Many opportunities exist but how to access them may not always be obvious.

Panacea is excited to announce a new service to clients — EOS, which stands for Enrichment Opportunities Service. As the name suggests, EOS has been established to help people with serious injuries learn more about the vast opportunities that exist for them.



Annie Farnworth with Fynn

The forming of EOS came about after seeing how many of our new serious injury clients experienced a high level of disconnection from life — particularly their social, sporting and friendship networks. “We were very aware of the need to provide additional support to our clients to help them re-engage with everyday activities and experience independence again,” says Jan Hilder. “But there was no single comprehensive guide to help direct people to the opportunities available after their accident.”

Facilitating EOS is **Annie Farnworth**. Annie is the mother of Fynn, an eleven year old boy who sustained a traumatic brain injury at six weeks of age.

With her first-hand experience, questioning mind and “anything’s possible” attitude, Annie has developed an extensive knowledge over the years on the opportunities, entitlements and resources available to people with serious injuries.

Annie is also the National Secretary of Disabled Surfers Association of New Zealand, co-coach of

the Special Olympics Greenhithe Soccer team and the founder of HemiKidz, the Paediatric and Adolescent Stroke Association of New Zealand.

“My involvement in the disabled community has introduced me to many amazing and inspirational people of all abilities. Through these connections, EOS can provide quality advice and guidance to clients and their families and connect them with services and networks in their communities,” says Annie.

We are delighted to have Annie working with us to provide such an important aspect of support.

You can contact Annie on 09 486 1456 or 0800729223, email annie@panaceahealthcare.co.nz

EOS can help you

- Learn about opportunities and networks
- Make connections with people
- Understand your entitlements
- Make informed decisions
- Access resources

EOS has relationships with -

- *Advocacy Services*
- *The Arts*
- *SPARC*
- *Adaptive Snowsports*
- *Parafed*
- *Halberg Trust*
- *Sailability*
- *Disabled Surfing*
- *Special Olympics*
- *Wheelchair Rugby*
- *Plus many more.....*

Inside this issue:

EOS	1
Travelability	2
Inside Story	2
The Brain	3
News in Brief	3
Training	4
Star People	4

Launching

PanaceaTravelability.com

3 2 1 blast off....While not quite the launch of NASA's Endeavour, the launch of panaceatravelability.com has received some wonderful coverage and commendations from people within New Zealand's disability community.

Panaceatravelability.com was launched on March 7th and since then the website has enabled many people to make all sorts of discoveries about New Zealand.

The website is unique for New Zealand tourism in that it enables people with mobility restrictions to plan and book a complete holiday - accommodation, activities and transport options - that meet their mobility needs.

While Panacea Healthcare has underwritten the costs of establishing the website, there is no intention of making a profit from it. "The site is a service to the disabled community and any profits will go back into sponsoring the disabled community," says Jan Hilder.

Some commendations the website has received –



Congratulations to Vini & Rhiza!

Congratulations to the Tanielu family with the safe arrival of their precious new daughter, Xyris, in May. Vini has been a client of Panacea Healthcare since March 2010 and his wife, Rhiza, is his primary caregiver. Rhiza attended a first aid course the day before Xyris was born!

Other Panacea Triumphs

Panacea Healthcare has had several other noteworthy achievements in the past year, among which the following:

Panacea Better at Home™ was launched in April. This is a range of support packages designed to enable elderly clients to live independently at home.

A new Panacea Healthcare branch was opened in **Rotorua** in May 2010, and in June 2010 a new Panacea Healthcare branch was opened in **Manukau**.

In June 2010 an **ACC practice review** of Serious Injury Services shows Panacea is consistently achieving against all ACC criteria.

Understanding our brain

Shirley Cooper, Panacea Healthcare's Clinical Nurse Manager for Waikato, BOP and Lakes District, recently spoke on the anatomy and physiology of the brain. This education session was held in conjunction with BOP's Headway Brain Injury Association and Panacea Healthcare. Below is a brief overview of her presentation.

The brain

The brain is a simple, yet complicated organ that functions on electrical impulses. It is the control/command centre with overall control of our body. The brain is unique, it gives us the power to think, plan, speak and imagine and feel, and it carries out a variety of purposeful and coordinated movements.

The brain has 4 main protection systems that protect it from harm, injury and destruction. These are: the outer surface (i.e. skin, a protective covering against chemical, bacterial and physical hazards) and the skull; and beneath the skull, the meninges and the blood brain barrier.

Most of the brain lies within the protected field of the skull. A tiny segment hangs below the skull itself but this is protected by a bony structure (the cervical spinal cord).

The brain is made up of 3 main parts namely Cerebrum, Cerebellum and brain stem.

The cerebrum

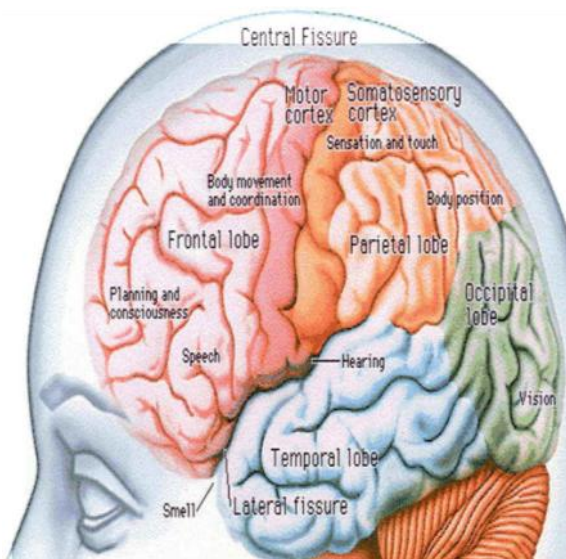
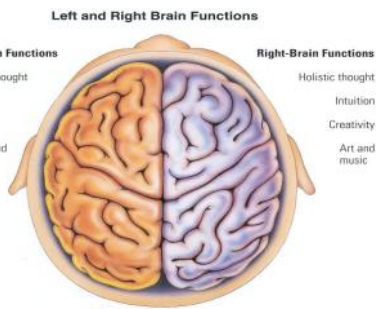
The cerebrum is the largest part of the brain. It is made up of a mass of nerve tissue; it is divided into two hemispheres, the right and left hemispheres.

The cerebellum

The cerebellum is the second largest portion of the brain, located below the occipital lobes of the cerebrum at the back and base of the head.

Nerve fibres form communication pathways between the cerebellum and the other parts of the central nervous system via the spinal cord.

The **cerebellum** plays an important role in motor control. It is also involved in some cognitive functions such as attention and language, and probably in some emotional functions such as regulating fear and pleasure responses. The cerebellum does not initiate movement, but it contributes to coordination, precision, and accurate timing.



The different lobes of the brain relate to different brain functions.

The Brain Stem

This is the lower extension of the brain where it connects to the spinal cord. Neurological functions located in the brain stem include those necessary for survival (breathing, digestion, heart rate, blood pressure) and for being awake and alert.

All information to and from our body passes through the brain stem on the way to or from the brain. Like the frontal and temporal lobes, the brain stem is located in an area near bony protrusions making it vulnerable to damage during trauma.

NEWS IN BRIEF

Well done to Service Coordinator **Heather Steele** who is now a qualified Assessor for staff undergoing Career Force Training.

Welcome back to **Vivien Koberstein** as acting Service Manager in Rotorua, while Kerry Bell is recovering from an injury.



Ramona Folau has been appointed as Service Manager in Manukau.

Ariana Tauroa is a welcome addition to the team as Service Coordinator in Hamilton. Ariana has several years office administration experience ranging from local government to medical insurance and reception. Ariana is excited about her future at Panacea Healthcare.



We are also pleased to welcome **Kathryn Dunham** as Service Coordinator in Hamilton. Coming from a financial/administration background, she looks forward to the diversity of Service Coordination.

Thumbs up to **Tauranga staff** who volunteered to support Christchurch people in need during their '10 days in Tauranga' - an event organised by Tauranga council. In addition to the offer of providing care, Panacea arranged for the supply of some medical equipment through a company contact.

Matariki Festival - celebrate our unique Maori New Year.

Matariki is a seasonal occasion to mark the end of harvest, a time to celebrate throughout June to mid July. For celebrations across New Zealand, refer to the following websites: www.matarikifestival.co.nz or www.matarikifestival.org.nz

Training Opportunities

Training in Counties Manukau

The following courses will be offered:

- ♦ Orientation and Induction
- ♦ Spinal Course
- ♦ Traumatic Brain Injury Course
- ♦ First Aid and CPR
- ♦ Manual Handling Course

Please contact Panacea Counties Manukau for more details and to book your place.

Training in Tauranga

The following courses will be offered in June:

- ♦ Sporting and Social Opportunities for People with Disabilities
- ♦ Injury Awareness and Prevention

The following courses will be offered in July:

- ♦ First Aid
- ♦ Neurological Disorders

The following course will be offered in August:

- ♦ Memory Loss & Confusion in Brain Injury & Neurological disorders

Please contact Panacea Tauranga on 07 579 4013 for more details and to book your place.

Training in Hamilton

The following courses will be offered in June:

- ♦ Manual Handling
- ♦ First Aid

Please contact Panacea Hamilton for more details and to book your place.

Training in Auckland

The following courses will be offered:

- ♦ First Aid - June
- ♦ Moving / Handling - August
- ♦ Manual Handling - July
- ♦ First Aid - September

Please contact Panacea Auckland for more details and to book your place.

Winners of the Children's Art Competition

Best in Age Group Category

Ashton (6 years)

Devon (9 years)

Lily (4 years)

Prizes given were:

Celebrations Chocolates,
Colouring Kit,
and a Family Movie



Pass.

Thanks everyone, we really appreciate your lovely efforts.

REMINDER

A gentle reminder to all staff to ensure that all signed Employment Contracts have been returned to the office.

Free Pharmacy Delivery in Hamilton

Unichem Beerescourt Pharmacy is offering a free delivery service to Hamilton-based Panacea clients for their medications. For more information, contact the Hamilton office.

Star People!

Each month, each regional office endeavours to select one of its team for this award after considering a number of criteria such as willingness to learn new skills, going the extra mile for clients, good communication and being committed to health and safety.

Congratulations to:

Sandra Burnett, Auckland (April)

Jennifer Robbie, Manukau (April)

Greta Kleintlaneveld, Tauranga (April)



Lyn Hamlin, Hamilton (April)

Alfred Knetz, Rotorua (April)



AUCKLAND
PO Box 33750
Takapuna 0740
Tel 09 486 1456

COUNTIES MANUKAU
PO Box 76871
Manukau 2241
Tel 09 262 0131

WAIKATO
PO Box 19147
Hamilton 3244
Tel 07 838 2332

TAURANGA
PO Box 14377
Tauranga 3143
Tel 07 579 4013

ROTORUA
PO Box 72
Rotorua 3040
Tel 07 343 9218